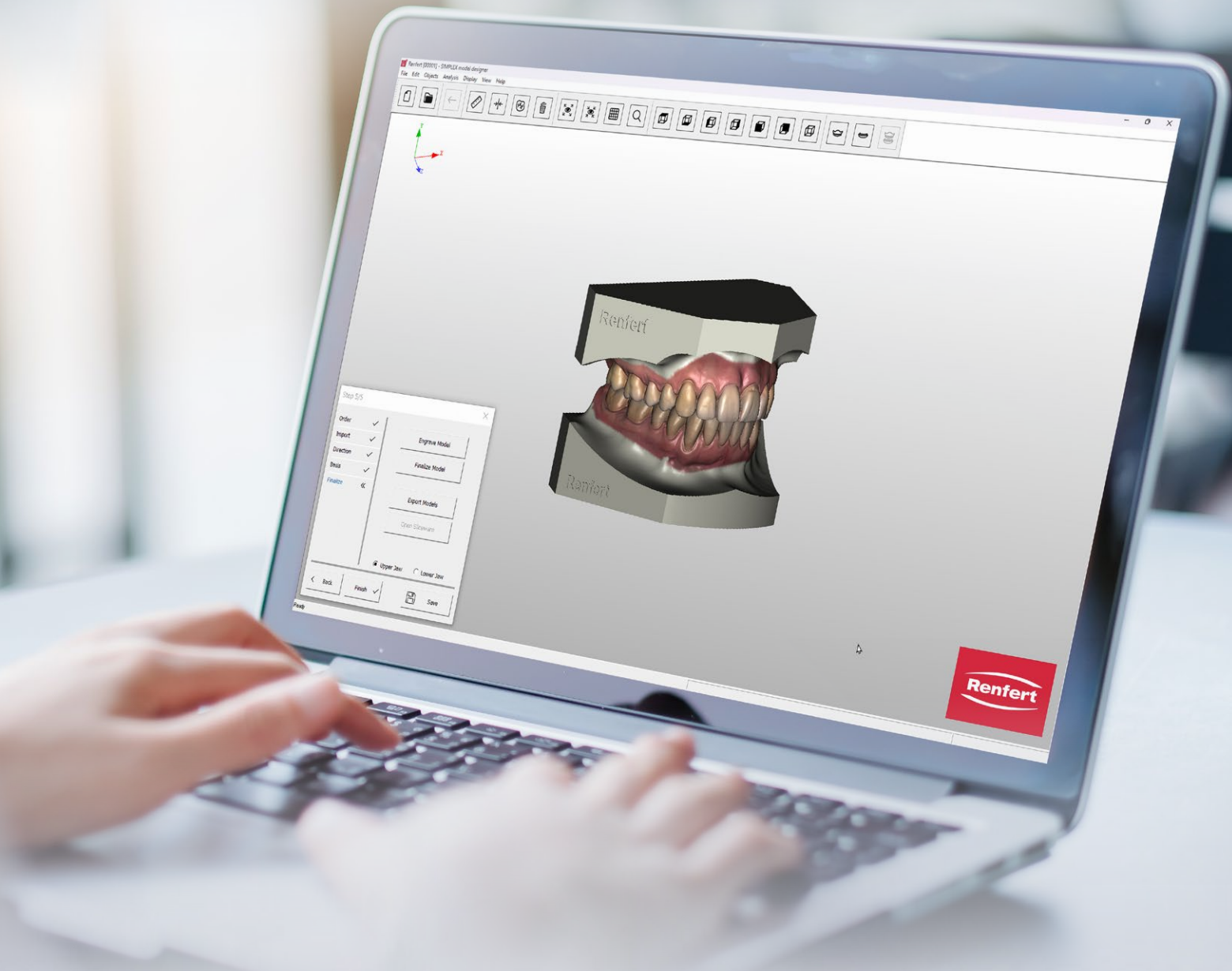


Renfert

making work easy



# SIMPLEX model designer

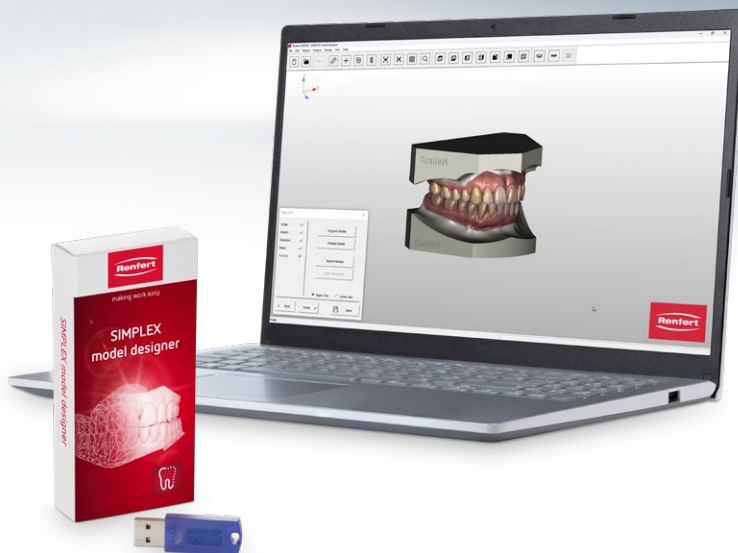
NEW

Digital model fabrication

# NEW SIMPLEX model designer

## Digital model fabrication

The easy way to a printed orthodontic model: with the SIMPLEX model designer, it takes just a few clicks to convert digital impressions and intraoral scans into digital models that are the basis for 3D printing. The software completes the SIMPLEX 3D filament printer system and bridges the gap between the intraoral scan data and the 3D printer. The SIMPLEX model designer can also be used as stand-alone software in filament printing. The easy operation makes the software ideal for beginners in digital model fabrication.

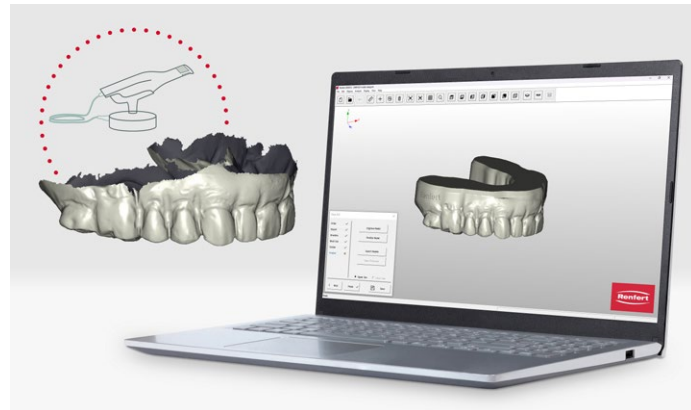


### Advantages

- Fast: from intraoral scan to print-ready model with just a few clicks.
- User-friendly: easy to use without lengthy instruction or training, ideal for newcomers to digital model fabrication.
- Cost-effective: low system requirements and no hidden costs such as monthly license fees or expensive updates.

### Details

- Time-saving: from data capture to the orthodontic model in just a few clicks.
- Flexible: can be used as an optional extra to complement the SIMPLEX 3D filament printer system or as a stand-alone solution.



Quick and easy from open scan to closed model

---

### System requirements

System	Windows 10 / 11
--------	-----------------

### Ordering information

SIMPLEX model designer	No. 17350050
------------------------	--------------